

# MULTIFAMILY FOR THE SINGLE-FAMILY BUILDER

## 2017 HOUSE REVIEW THEMES

SEPTEMBER On the Boards

OCTOBER Luxury Homes

NOVEMBER Pocket Neighborhoods

DECEMBER Contemporary Designs

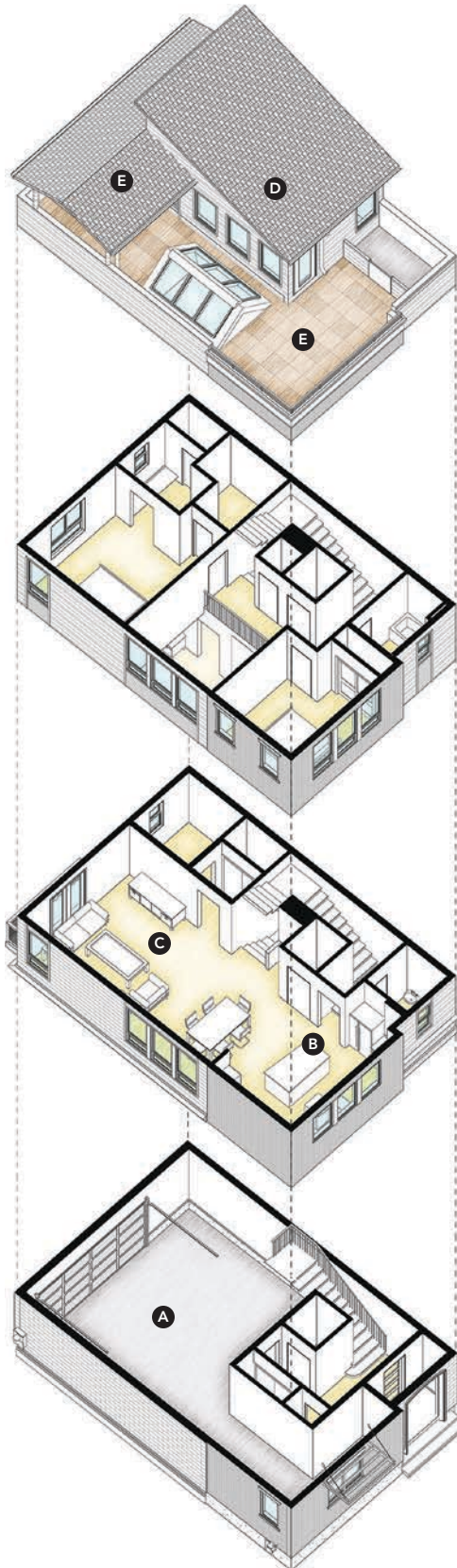
For single-family builders that haven't yet ventured into multi, these designs offer an approachable introduction

By **Larry W. Garnett, FAIBD, House Review Lead Designer**

**T**hough most single-family builders are currently enjoying a backlog of work, it never hurts to diversify and gain some experience with multifamily housing. Smaller projects, easily scaled to fit a variety of building sites, offer a smooth transition because the builder can rely on the same subcontractors and building techniques. The following ideas from our Design Team range from an economical townhouse with a single garage to a three-level design that's ideal for an infill location. Well-conceived designs like these are often welcomed by communities that have become reluctant to approve massive apartment projects. High occupancies, rising rates, and a growing desire for high-quality rental housing may just inspire you to venture into the world of multifamily.



**F**or most builders, townhomes offer a reasonable transition to the multifamily realm. The construction type is similar enough to single-family detached, and there's the flexibility to keep unit counts lower per building to allow for phasing of buildouts. Natural light is often compromised with multifamily, yet by distributing living areas on multiple floors, it's easier to set big windows on the front and rear of the home so that even an interior unit feels bright and spacious. This home has a 5-by-9-foot skylight on the roof that lets natural light spill through the spaces; though an interior unit, it remains light and bright. The product offers a fourth-floor bonus room and roof terrace, with a large living space, wet bar, and great indoor/outdoor connections. Optional upgrades include elevators and dumbwaiters to ease connection between spaces on multiple floors.



## WONDERLAND TOWNHOMES AT SUPERIOR TOWN CENTER

### DESIGNER

Seth Hart  
DTJ Design  
shart@dtjdesign.com  
dtjdesign.com  
303.443.7533

### PLAN SIZE:

Width: 25 feet  
Depth: 38 feet  
Living area: 1,800 sf to 2,000 sf

- Ⓐ Oversize garages allow for extra storage and flexibility
- Ⓑ Open kitchens with generous islands and lots of glass
- Ⓒ Open, linear great room concept makes each space live larger
- Ⓓ Fourth-floor bonus room with wet bar and powder room
- Ⓔ A combination of covered and open-air roof decks allows for flexibility in outdoor living

**THE SANTA ROSA**

**ARCHITECT**

Richard Handlen, AIA,  
LEED AP  
EDI International  
richard.handlen@edi-  
international.com  
edi-international.com  
415.362.2880

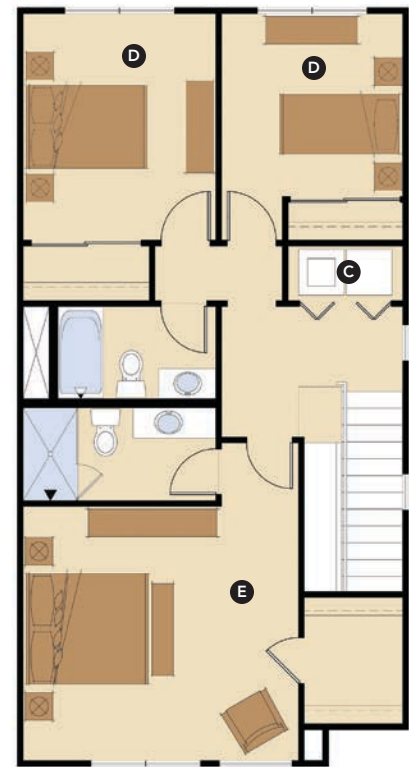
**PLAN SIZE**

Width: 42 feet  
Depth: 22 feet  
Living area: 1,422 sf



**T**his compact plan with a one-car garage is the perfect starting point for a single-family builder to venture into the multifamily market with a small step. The first and second floors stack for ease of construction. The design incorporates a contemporary exterior, but a variety of architectural styles can be used to fit any region. As shown, the sloping roofs could align with the optimum orientation for solar panel access. The plan can be grouped in many configurations. Duplex and triplex buildings are exempt from accessibility requirements in most jurisdictions.

- A** The first-floor living space is divided enough to provide some visual and acoustical privacy between the kitchen and living areas
- B** The foyer has a dramatic two-story opening for views up the stairway
- C** The laundry alcove can accommodate side-by-side or stackable units
- D** The secondary bedrooms are spacious and can be divided off from the rest of the second floor. This works for small children or bounce-back kids, not to mention roommates
- E** The master suite faces the front of the house for eyes on the street to promote neighborhood security



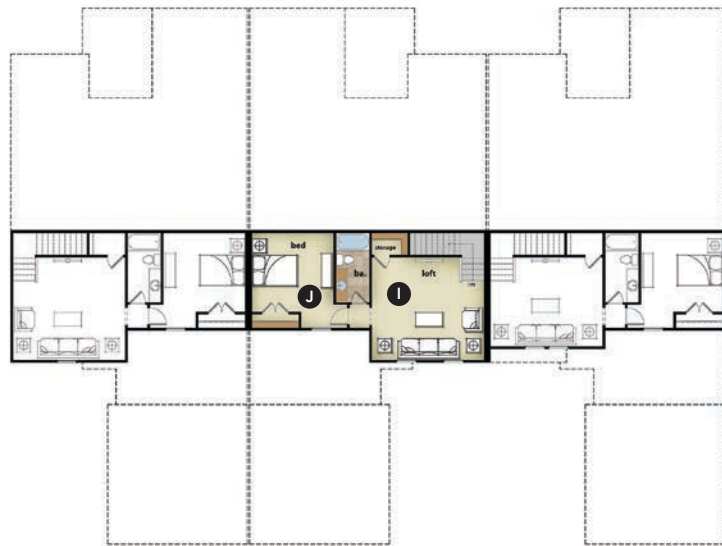
**THE BLOOMFIELD**

**DESIGNERS**

GMD Design Group  
 Scott Gardner, AIA  
 scott@gmddesigngroup.com  
 919.320.3022  
 Donnie McGrath  
 donnie@gmddesigngroup.com  
 770.375.7351

**PLAN SIZE**

Width: 35 feet  
 Depth: 81 feet  
 Living area: 2,216 sf



**T**his 35-foot-wide attached plan, focused on main-floor living, nicely accommodates the needs of a multigenerational buyer. The courtyard driveway minimizes the impact of garage doors on the street. A separate suite with bedroom, living space, and separate entry, all on the main level, can flex to changing needs as time goes on. The plan is illustrated as a triplex, but can be used as a duplex or in a larger unit-count building.

- **A** Courtyard driveway with side-loaded garage
- **B** Separate entrance to suite
- **C** Main entrance to the home
- **D** Separate suite with bedroom, bath, and living room
- **E** Dining room or flex room
- **F** Large, open family, breakfast, and kitchen area
- **G** Main floor owner's suite
- **H** Covered outdoor-living space
- **I** Bonus room/loft
- **J** Second-floor bedroom



COURTYARDS

ARCHITECT

Donald F. Evans, AIA  
 The Evans Group  
 devans@theevansgroup.com  
 theevansgroup.com  
 407.650.8770

PLAN SIZE

Model A

Width: 16 feet  
 Depth: 90 feet  
 Living area: 1,165 sf

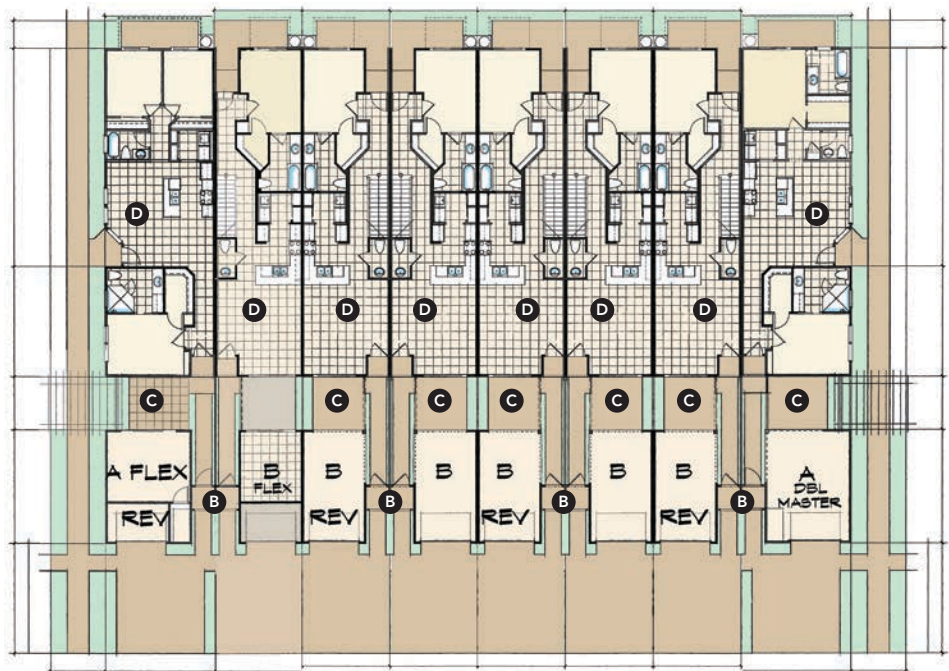
Model B

Width: 20 feet  
 Depth: 90 feet  
 Living area: 1,688 sf



One- and two-story multifamily in a six-unit configuration is a perfect introduction to multifamily building for the single-family builder. These homes provide a simple starter home for young buyers or a perfect downsized home for senior buyers. Model A is a one-story, three-bedroom, two-bath home with a keeping room, dining room, and kitchen at its core. Model B is a two-story home with the master suite on the first floor with the gathering place, a keeping room, and kitchen, while the two guest suites and leisure room are upstairs.

- A** Six-unit configuration with one-story homes on the end and two-story homes at the center decreases the appearance of density while providing architectural interest and giving buyers a choice of product
- B** Gated portico entry sequence creates privacy and visual appeal
- C** Private courtyard between the garage and living space
- D** A large, open core space with keeping room, dining, and kitchen is perfect for singles, couples, families, and seniors alike



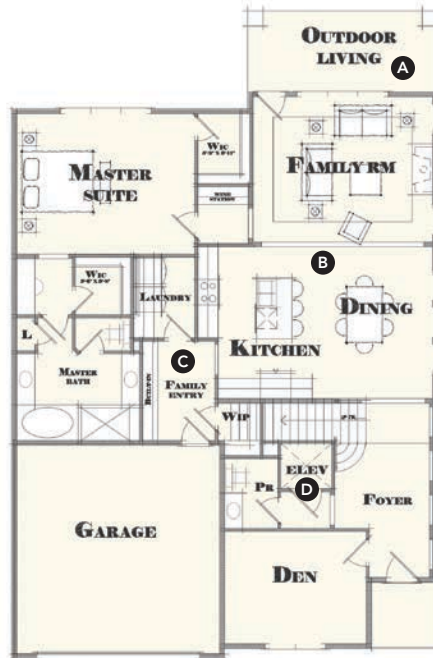
**HEMINGWAY**

**ARCHITECT**

Todd Hallett, AIA, CAPS  
 TK Design & Associates  
 thallett@tkhomedesign.com  
 tkhomedesign.com  
 248.446.1960

**PLAN SIZE**

Width: 42 feet  
 Depth: 56 feet  
 Living area: House, 3,415 sf;  
 porches, 652 sf



**FIRST FLOOR**  
 1517 SQ FT



**SECOND FLOOR**  
 1505 SQ FT

Often single-family builders take on a multifamily project to seize an opportunity; a deal presents itself that's just too juicy to pass up. To keep costs low, we will often design homes that have the chops to stand on their own as a single-family home with the option to convert to multifamily when required, which saves the single-family builder considerable money in the long run. This design fits that bill. It easily can convert from single-family to multifamily and vice versa.

- A** Outdoor living provides additional living area and an overflow space while entertaining
- B** The open plan creates opportunities to gain natural lighting from other spaces
- C** A large family entry space is perfect for organizing the family
- D** The elevator offers accessibility to the second-floor spaces

